



cosma

x



merigéo

the cosma founding team



Frédéric Mittaine
CEO & SALES

18 years in subsea industry
Télécom Paris + Ponts & Chaussées
ASN, Fugro, CGG



Yannick Pennecot
ROBOTICS & OPERATIONS

15 years program management
EPF + University of Maryland
Next Blue Tech, Altran, CGG



Quentin Chenevier
DATA & PRODUCT

12 years in data science
Ecole Polytechnique + TBS
Airbus, CapGemini



Laura Huguenin
BIOLOGY & DELIVERY

8 years in Marine biology
PhD in Marine Biology
Professional diver

An underwater photograph of a coral reef. The scene is dominated by various types of coral, including branching and table corals. The water is clear, and the lighting is natural, highlighting the textures and colors of the marine life. The overall tone is a deep, vibrant blue-green.

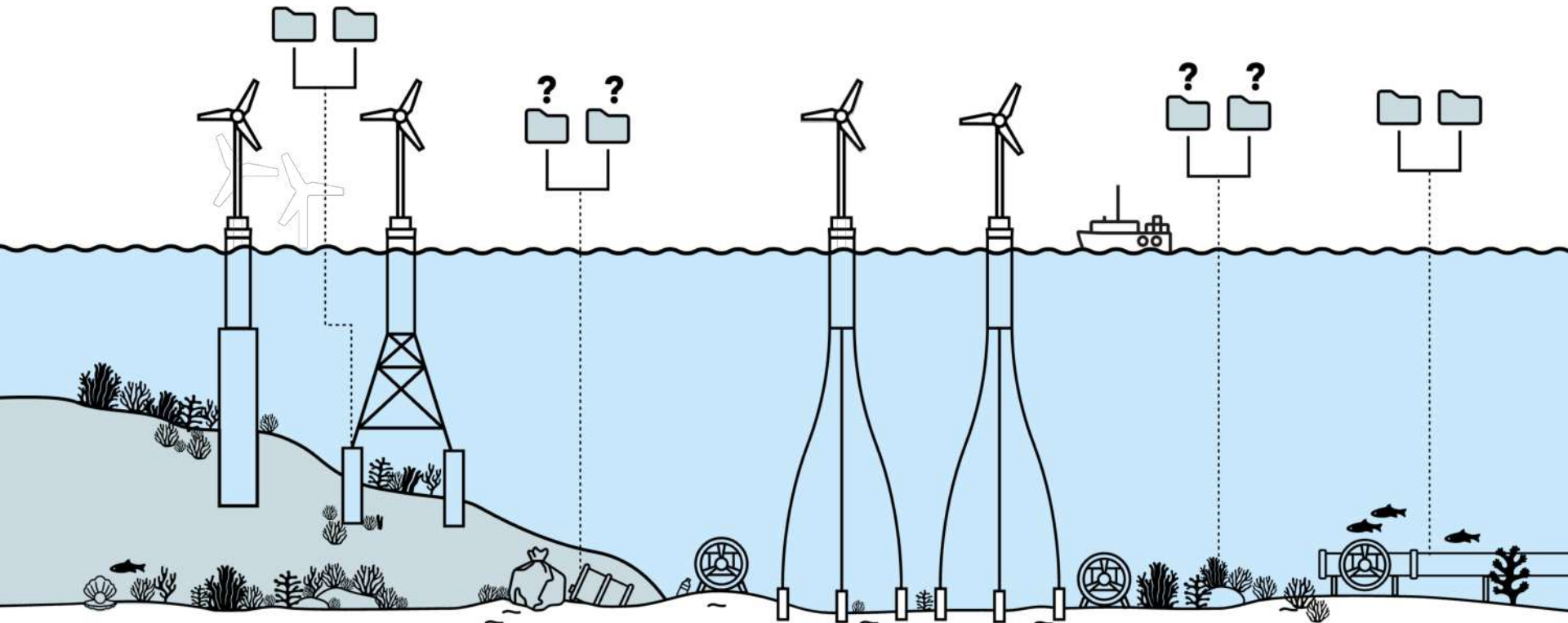
our mission

**Contribute to the preservation of marine biodiversity
by enabling benthic ecosystems monitoring at scale.**

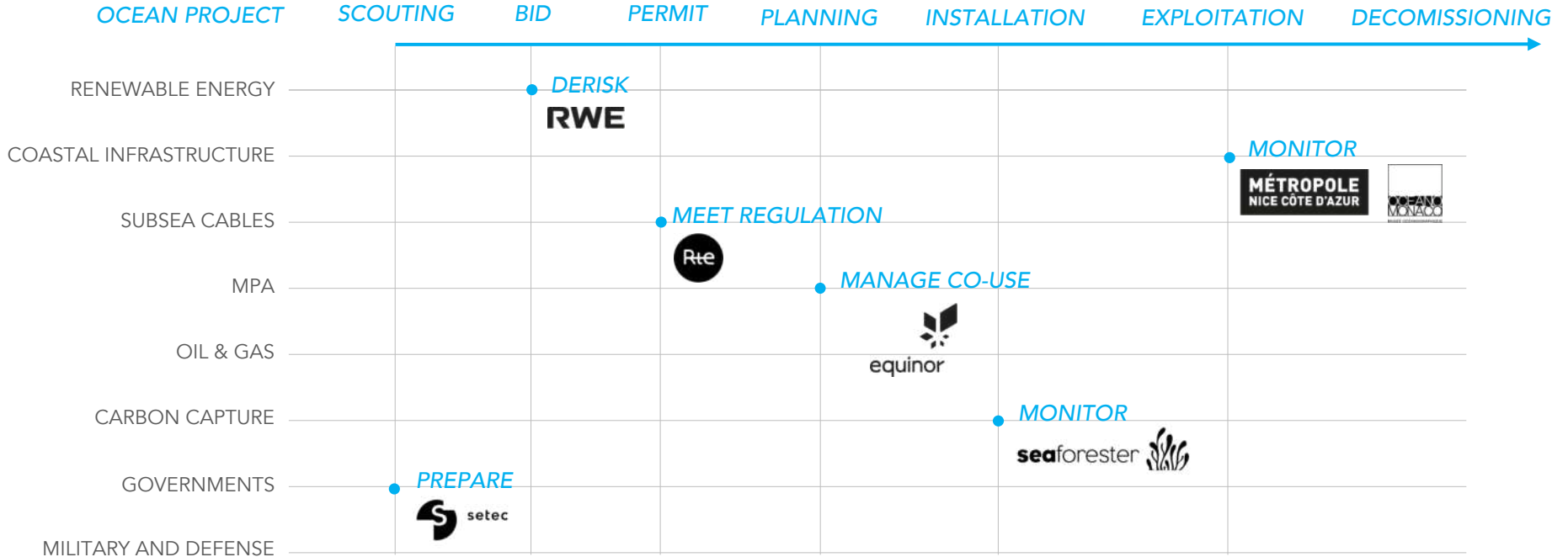
An aerial photograph of the ocean surface, showing a vast expanse of deep blue water with intricate, swirling patterns of ripples and small waves. The lighting creates a shimmering effect, with bright highlights reflecting off the water's surface, particularly in the upper right quadrant. The overall texture is dynamic and textured.

Some context about the Ocean Industry

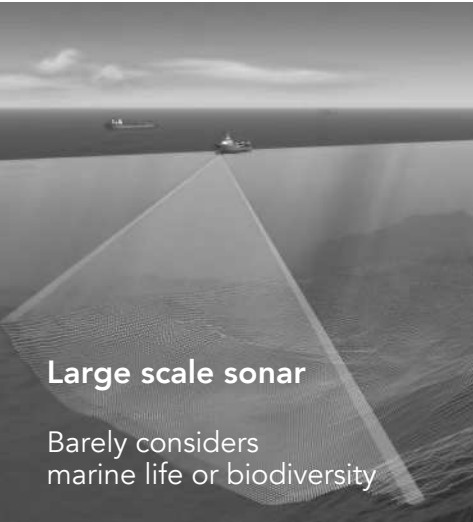
Ocean Data – \$3 billion in 2024 – is set to triple over the next 10 years, Seabed & marine life are the growing focus



Subsea data is becoming increasingly strategic



But nothing is easy underwater: existing solutions do not meet the challenge



cosma

**We observe, map and monitor
seabed ecosystems over large acreage,
at affordable cost and in a record time**

The Cosma operating system
is built upon 2 major innovations



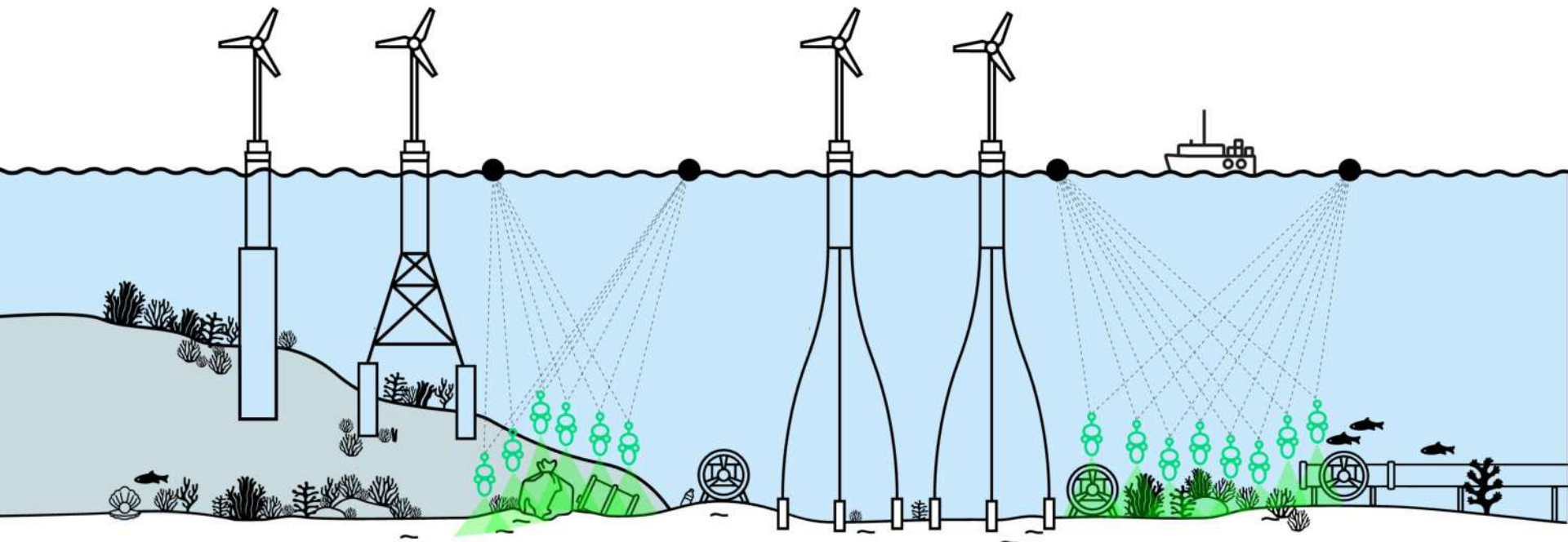
Robotics and
at sea operations

Cosma AI
powered platform

1

Swarms of underwater drones to perform large scale data acquisition

Cosma collects marine data with swarms of underwater drones from 2 to 200m deep from few hectares to several km²



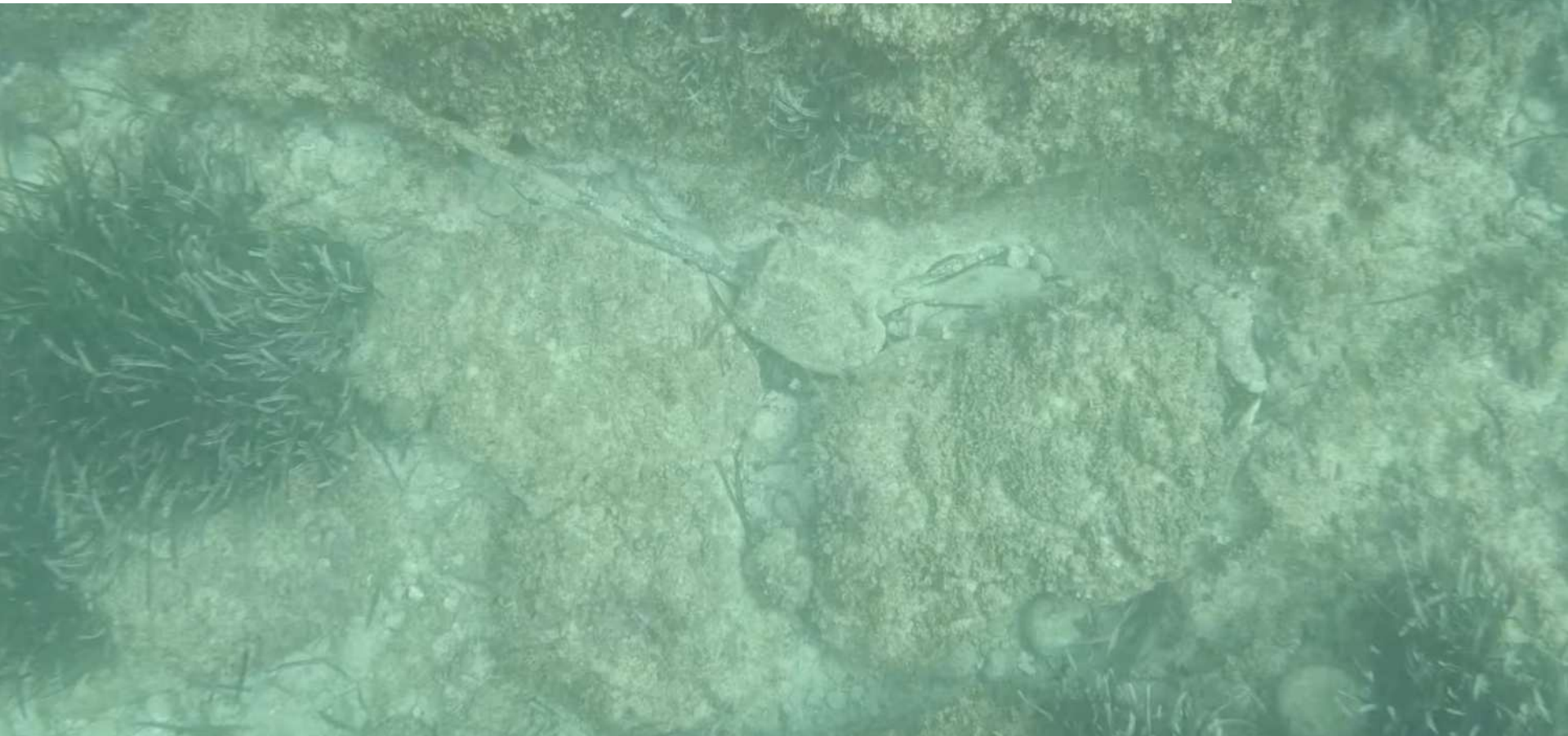
1

**Swarms of underwater drones
to perform large scale data acquisition**



2

Cosma AI powered platform for processing and analyzing ocean survey data



2

Cosma AI powered platform for processing and analyzing ocean survey data

Full cloud native and AI
powered suite of data

RECONSTRUCTION



2

Cosma AI powered platform for processing and analyzing ocean survey data

Full cloud native and AI
powered suite of data

RECONSTRUCTION

INTERPRETATION



2

Cosma AI powered platform for processing and analyzing ocean survey data

Full cloud native and AI
powered suite of data

RECONSTRUCTION

INTERPRETATION

REPORTING CAPABILITY



cosma

**The 21st century ocean survey company,
with biodiversity at the heart of our operations**



Grand Rue

Place du 14 Juin

Place du 14 Juin

Port Grimaud - Saint-Tropez

Port Grimaud - Saint-Tropez

Port Grimaud - Saint-Tropez

Port Grimaud - Saint-Tropez

Port Grimaud - Saint-Tropez

Rue de la Griede

Rue des Sables

Rue des Sables

Rue de la Gisele

Rue de la Gisele

An underwater photograph of a coral reef, viewed from an elevated perspective. The water is clear blue, and the reef is covered in various types of coral and small fish. A prominent yellow fish is visible on the right side. A light blue grid is overlaid on the entire image.

cosma

**Benthic inventory and monitoring,
at the scale of the ocean**

Frédéric Mittaine +33645620336 frederic.mittaine@cosma.tech